

---

# BUS EXTENDER MODULE

---

DESIGNED FOR USE WITH THE 200 SERIES RTU FAMILY, DFS RTU MODULES ARE ASSEMBLED FROM THE HIGHEST QUALITY COMPONENTS AND DESIGNED TO MAXIMIZE USABILITY WHILE MINIMIZING INSTALLATION, MAINTENANCE, AND DOWNTIME.

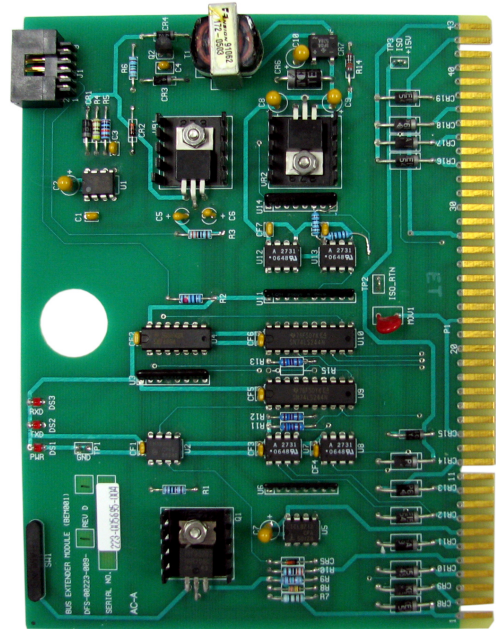
The Bus Extender Module (BEM) is designed to allow I/O modules to be remotely located from the Radio Interface Module (RIM). By combining two RTUs into one logical unit, all modules at both RTUs can communicate with the central site through a single RIM. This configuration provides a versatile and cost-effective means for expanding I/O at a site.

Typically, a BEM is used when the antenna at the site must be located some distance from the control panel being monitored. Additionally, a BEM can be used to incorporate a TAC Pack Telemetry Control Unit (TCU) into an RTU.

In a standard installation, two BEMs and two enclosures are required: one enclosure with a RIM installed is mounted near the antenna (local RTU); another enclosure is installed next to the equipment being monitored (remote RTU). In a TCU installation where the local BEM is connected to a TCU, only one BEM is required – the TCU has a built-in BEM adapter.

BEMs are connected via six-pair cables up to 1000 feet in length. Once wired, all modules at the connected RTUs will communicate to the central site via the RIM module at the local RTU.

For testing and troubleshooting purposes, the BEM features a communications monitor only port to verify valid communications through DFS' WinRTU Test software.



---

## FEATURES AT A GLANCE

- Connect two (2) RTUs to create one logical RTU
- Add a TCU to an RTU
- Locate RTUs up to 1000 feet apart
- On-board communications and functional firmware
- On-board voltage regulation
- LEDs for power, receive data, and transmit data
- Surge protected (nondestructive)
- Removable without disturbing field wiring
- No on-board adjustments, switches, or straps (self-configuring)

## SPECIFICATIONS

Model	BEM001-1
Board Size	5.25" x 6.75"
Power Requirements	8 to 13 VAC @ < 200mA
Maximum Cable Length	1000 feet
Maximum Size	6 pair 24 gauge shielded
Maximum Combined Remotes	2
LEDs	Power, receive data, transmit data

## TYPICAL APPLICATIONS

- Expand I/O at a site by combining two (2) Remote Terminal Units (RTUs) into one logical unit that communicates through a single radio.
- Incorporate a TAC Pack Telemetry Control Unit (TCU) into a Remote Terminal Unit (RTU).

## WARRANTY

This product carries a one (1) year return-to-factory warranty against defects in material and workmanship. When installed with factory recommended surge protection, the return-to-factory warranty is extended to three (3) years. The extended warranty also covers damage due to lightning and surge for the entire three-year period when installed per factory-approved requirements. DFS will repair or replace at its option, F.O.B. Melbourne, Florida, any part or parts of this product during the warranty period. A Return Authorization (RA) must be obtained by contacting the DFS Factory Repair Center at 321-259-5009 or by email at [rma@dataflowsys.com](mailto:rma@dataflowsys.com).